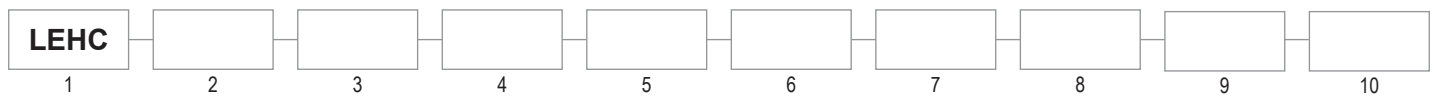
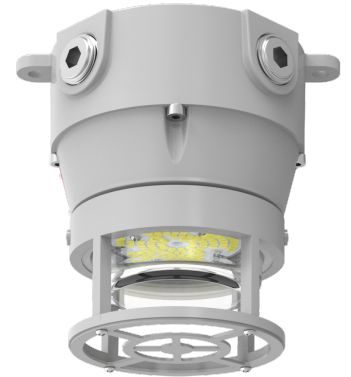


The LEHC Series is a modern day LED jelly jar solution designed to replace traditional incandescent fixtures. This fixture is suitable for marine and hazardous locations. The LEHC features a long lasting housing construction and a low profile lens making it the perfect fit for even the smallest spaces.



1 SERIES	2 SOURCE	3 VOLTAGE	4 CCT	5 DIMMING	6 DISTRIBUTION ANGLE
LEHC	L1: 15W L2: 20W	V1: 120-277VAC (50/60Hz)	3: 3,000K 4: 4,000K 5: 5,000K	Blank: None D1: 0-10V Dimming	V120: 120° Angle
7 DIFFUSER TYPE		8 MOUNTING TYPE		9 LED TYPE	
GSF: Short flat glass PSF: Short flat polycarbonate		MC: Ceiling mount MP: Pendant mount MW: 90° wall mount MR: Rotatable wall mount		Blank: Flat SMT board	
10 OPTIONS					
Blank: No EM battery EM: EM Battery					

CERTIFICATIONS

UL844
 CI D2 Groups A,B,C,D
 UL1598
 UL1598A Marine Outside Type
 ABS
 IP66
 IK08

CONSTRUCTION

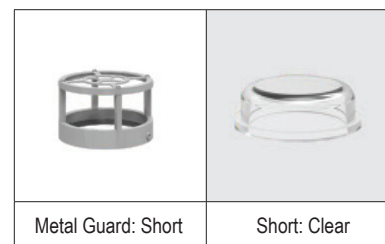
Copper-free cast aluminum housing
 Tempered glass lens
 Polycarbonate lens
 Metal Guard

FEATURES

4 Cable Entires
 100 Lm/W
 CRI >70
 Mounting: Ceiling, Pendant, Wall, Adjustable
 Four 3/4" Hubs

Ambient Temperature and T-Code Ratings		
L1: 15W	-40°C to 40°C	T5
L2: 20W	-40°C to 40°C	T4
L1: 15W (EM)	0°C to 40°C	T5
L2: 15W (EM)	0°C to 40°C	T4

Lumen Output	
15W	1,500
20W	2,000







LEHC


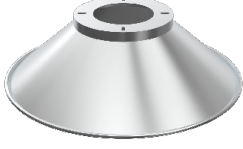
LED HAZARDOUS LIGHTING

Elevator Pits • Man Doors • Power Plants • Storage Facilities • Tunnels

MOUNTING OPTIONS

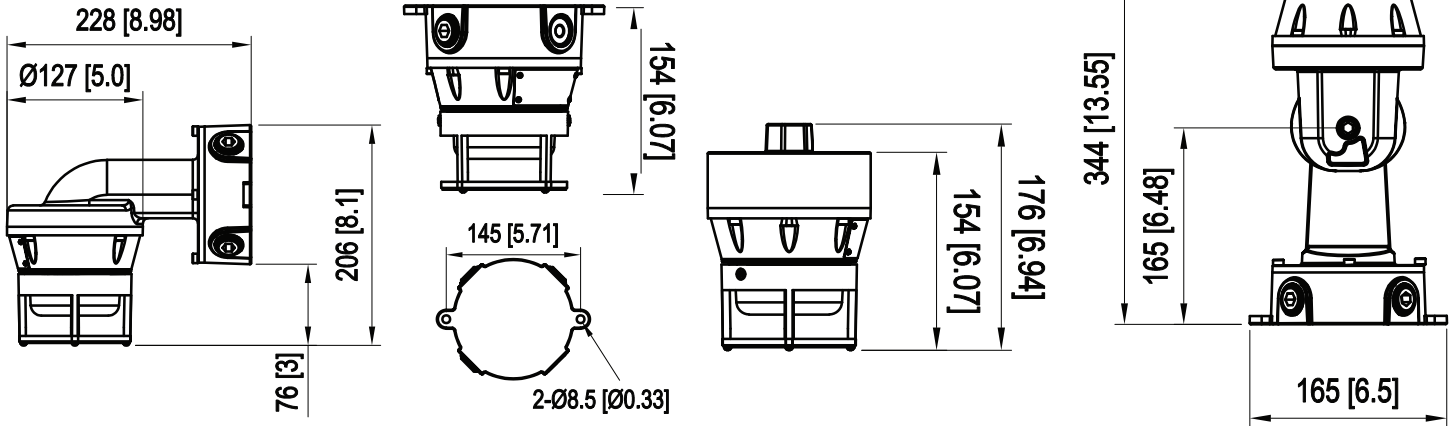
			
Ceiling Mount (MC)	Pendant Mount (MP)	90° Wall Mount (MW)	Rotatable Wall Mount (MR)

FIELD INSTALLED REFLECTOR (ORDERED SEPARATELY)

	
60° Reflector / Part # LEHC-60	90° Reflector / Part # LEHC-90

DIMENSIONS

Millimeters [Inches]



EMERGENCY DIMENSIONS

Millimeters [Inches]

