

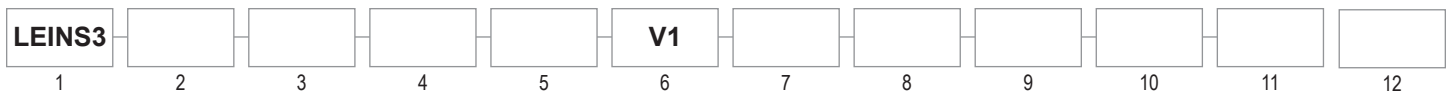


LEINS3

LED INSPECTION LIGHTING

Paint/Plastic Inspection • Defect Detection • Finesse Decks • Inspection Decks • Polish Decks

The LEINS3 Series is a must have when the finish of any surface counts! This fixture is constructed from 20 gauge cold rolled steel and has a powder coated finish. This fixture is designed to create a well defined lamp image using light and dark contrasts that cause defects in the paint show to show for ease of detection and repair. This fixture is available as a 2', 4', 6', and 8' fixture and has the flexibility to allow the use of 1, 2 or 3 rows of LED's. There are a multitude of lens, cord and housing color options in this fixture Series.



1 SERIES	2 HOUSING	3 SOURCE	4 LENGTH	5 ROWS	6 VOLTAGE
LEINS3	Blank: Std W: Wide Housing (2 row only)	P4: 68W (6200Lm)* P6: 94W (8800Lm)* P9: 148W (12800Lm)* *Nominal power (watts and lumens) output for a 4 Ft., 4 row fixture at 5000K. See web site for other configurations.	2: 2 Ft. 4: 4 Ft. 6: 6 Ft. 8: 8 Ft.	1 (No 2 Ft.) 2 3 4 (No 8 Ft.)	V1: 120-277V (50/60Hz)
7 DIMMING	8 CORD	9 LENS	10 REFLECTOR	11 CCT	12 FINISH
Blank: No Dimming D1: Step Dimming (Not available for all sizes) D2: 0-10V D3: DALI (Not available for all sizes)	Blank: No Cord C: 6 Ft. Blunt End Cord C1: 6 Ft. Cord with 120V Twist Lock Plug C2: 6 Ft. Cord with 277V Twist Lock Plug	LF: Tempered Glass Lens with Frosted Lens Insert LFS: Tempered Glass Striped Lens with Frosted Insert LG: Tempered Glass Lens LGL: Tempered Glass Lens with Linear Gradient Insert LGS: Tempered Glass Striped Lens	RS: Aluminum Specular Reflector RW: Reflective White Reflector	3: 3000K 4: 4000K 5: 5000K 6: 6500K	PB: Powder Coat Black PW: Powder Coat White

CERTIFICATIONS

UL1598 / CSA 22.2 No. 250.0
 UL8750 / CSA 22.2 No. 250.13
 -20°C to 50°C Ambient Rating
 CRI Ra≥95
 LUMEN MAINTENANCE (L70) >60,000 HRS. (REPORTED)

FEATURES

20 Gauge Steel Powder Coated Housing
 Can be used in conjunction with dimming drivers

LENS

Tempered Glass or Tempered Striped Glass
 Frosted Lens or Frosted Lens Striped

ELECTRICAL

120-277V, 50/60Hz
 6' Cord with blunt end (Optional)
 6' Cord with twist lock plug (Optional)
 -Must specify 120V or 277V

MOUNTING OPTIONS

Pivot Mount Kit (P/N 10314)
 Stationary Mount Kit (PN 10315)
 Flush Mount Kit (P/N 10387)
 Cable/Chain Hang Kit (P/N 15990)

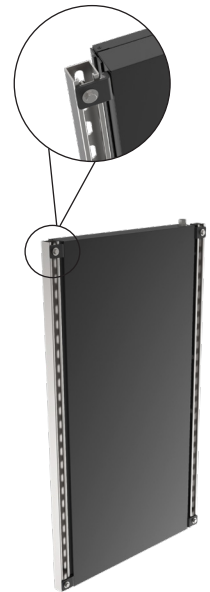
*These products are Manufactured in the USA with both domestic and imported components; not all fixture configurations are compliant. Contact LDPI Sales with specific part number and requirement - Build America, Buy America, TAA or any other federal procurement act for compliance confirmation. Compliance confirmation can take up to 3 days.



Pivot Mount Kit
(10314)



Stationary Mount Kit
(10315)



Flush Mount Kit
(10387)



Chain/Cable Hang Mount Kit
(15990)

Note:
 Each kit includes hardware and brackets to mount to the fixture.



1-800-854-0021 www.ldpi-inc.com
 LDPI® is a registered trademark of LDPI, Inc. © LDPI, Inc.

Product design and specifications subject to change without notice.
 Visit www.ldpi-inc.com for the most current version and photometric data. v.03.27.26

LEINS3

LED INSPECTION LIGHTING

Paint/Plastic Inspection • Defect Detection • Finesse Decks • Inspection Decks • Polish Decks



PERFORMANCE

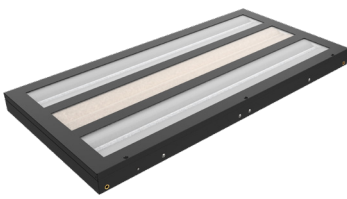
Lumen Output by Product Configuration

	Source	2 Ft.			4 Ft.			6 Ft.			8 Ft.		
		Watts	LENS		Watts	LENS		Watts	LENS		Watts	LENS	
			LG, LGL, LF	LGS, LFS		LG, LGL, LF	LGS, LFS		LG, LGL, LF	LGS, LFS		LG, LGL, LF	LGS, LFS
1 Row	P4	N/A			17	1550	850	26	2300	1300	34	3100	1700
	P6				24	2200	1200	36	3300	1800	47	4400	2400
	P9				37	3200	1750	56	4800	2650	74	6400	3500
2 Row	P4	17	1550	850	34	3100	1700	52	4600	2600	68	6200	3400
	P6	24	2200	1200	47	4400	2400	71	6600	3600	94	8800	4800
	P9	37	3200	1750	74	6400	3500	111	9600	5300	148	12800	7000
3 Row	P4	26	2300	1300	51	4650	2550	78	6900	3900	102	9300	5100
	P6	36	3300	1800	71	6600	3600	107	9900	5400	141	13200	7200
	P9	56	4800	2650	111	9600	5250	167	14400	7950	222	19200	10500
4 Row	P4	34	3100	1700	68	6200	3400	104	9200	5200	N/A		
	P6	48	4400	2400	94	8800	4800	142	13200	7200			
	P9	74	6400	3500	148	12800	7000	222	19200	10600			

Example: A 4 Ft. fixture with 3 rows of LEDs with a P9 power source will deliver approximately 9600 lumens with a LG, LGL or LF type lens.

Amperage by Product Configuration

	2 Ft.			4 Ft.			6 Ft.			8 Ft.		
	Watts	Amps		Watts	Amps		Watts	Amps		Watts	Amps	
		120V	277V		120V	277V		120V	277V		120V	277V
1 Row	N/A			17	0.14	0.06	26	0.22	0.09	34	0.28	0.12
				24	0.20	0.09	36	0.30	0.13	47	0.39	0.17
				37	0.31	0.13	56	0.47	0.20	74	0.62	0.27
2 Row	17	0.14	0.06	34	0.28	0.12	52	0.43	0.19	68	0.57	0.25
	24	0.20	0.09	47	0.39	0.17	71	0.59	0.26	94	0.78	0.34
	37	0.31	0.13	74	0.62	0.27	111	0.93	0.40	148	1.23	0.53
3 Row	26	0.22	0.09	51	0.43	0.18	78	0.65	0.28	102	0.85	0.37
	36	0.30	0.13	71	0.59	0.26	107	0.89	0.39	141	1.18	0.51
	56	0.47	0.20	111	0.93	0.40	167	1.39	0.60	222	1.85	0.80
4 Row	34	0.28	0.12	68	0.57	0.25	104	0.87	0.38	N/A		
	48	0.40	0.17	94	0.78	0.34	142	1.18	0.51			
	74	0.62	0.27	148	1.23	0.53	222	1.85	0.80			



LEINS3

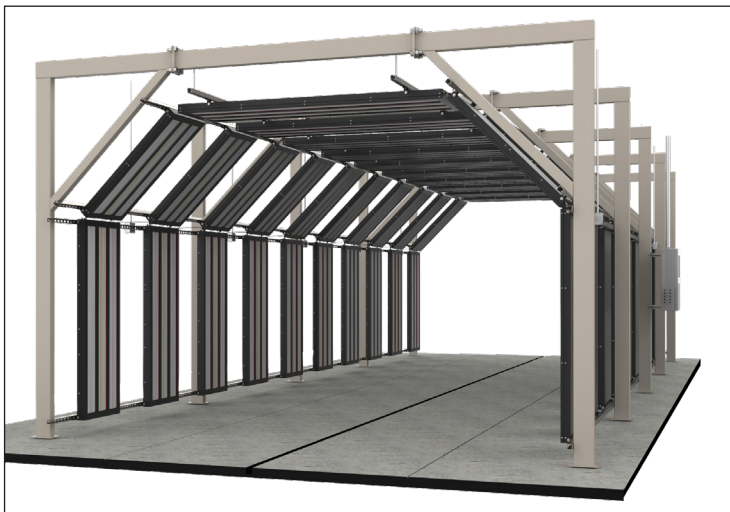
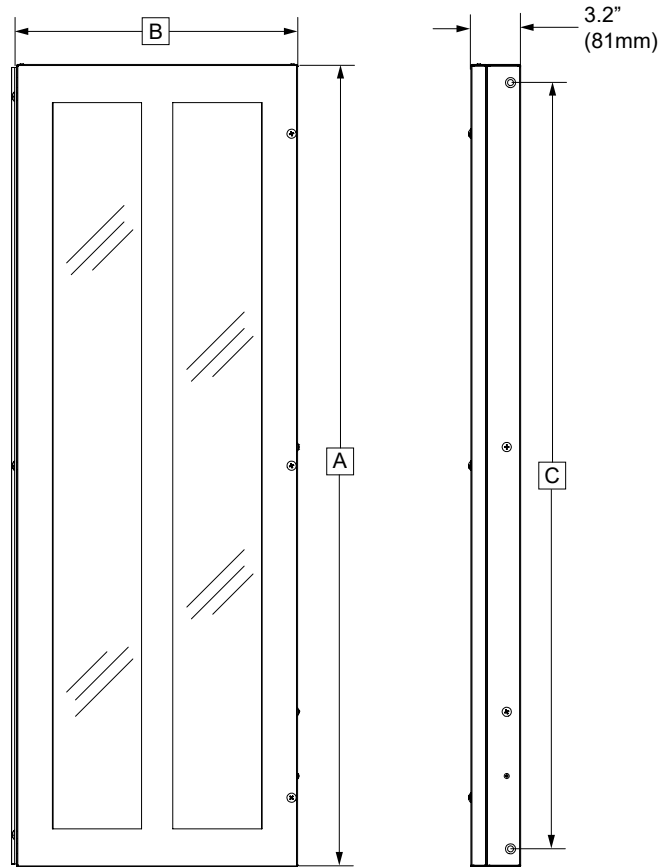
LED INSPECTION LIGHTING

Paint/Plastic Inspection • Defect Detection • Finesse Decks • Inspection Decks • Polish Decks

DIMENSIONS

Dimensions by Product Configuration

		1 Row		2 Row		3 Row	4 Row
		LEINS3	LEINS3	LEINS3W	LEINS3	LEINS3	
	B	10"	17 1/2"	20 1/2"	25"	32 1/2"	
2 Ft.	A	n/a	28"				
	C	n/a	23 3/4"				
4 Ft.	A	50"					
	C	47 3/4"					
6 Ft.	A	72"					
	C	70"					
8 Ft.	A	94"					n/a
	C	70"					n/a



LEINS3 shown in inspection tunnel application



LEINS3 shown with DALI cabling

